

INSTALLING/REPLACING THE BATTERY

To operate the sensor, a CR123A battery with a nominal voltage of 3V is used.

Batteries must be replaced when receiving an SMS notification «Replace battery in DMS» (telemetry system function) or if the sensor is not connected to the system.

To install/replace the battery, carefully follow the steps below:

- unscrew the two screws using the H 2.0 hexagonal screwdriver;
- remove the battery cover;
- install/replace the battery strictly observing the polarity (when installing a high-quality battery, the sensor status indicator will make three green flashes, a low charge level will be indicated by one flash);
- assemble the sensor in the reverse order.

SOFTWARE UPDATE

You can update sensor software using the Pandora Specialist app (Android). Sensor must be paired with the system.

- Open the Pandora Specialist app and connect to the system.
- Go to System devices -> DMS 1 / 2 / 3 / 4 -> Update.
- Choose one of the update options: «Download firmware» - download current software from the server; «File Manager» - use previously downloaded software.
- Start the update.

Pandora DMS-105BT WIRELESS DOOR SENSOR

Wireless peripheral component of the security system Pandora/PanDECT systems designed to control internal or external space of the object according to the state of the door position, impact and movement, temperature, water leakage.




PACKAGE CONTENTS

Sensor.....	1.
Magnet.....	1.
Fasten kit.....	1.
Manual.....	1.

SPECIFICATIONS

Radio interface:	2.4-2.5 GHz (BT 5.0)
Data transfer protocol:	Bluetooth 5.0
Battery:	CR123A (1 pc.)
Average battery life:	12 months
Operating range*:	from -25°C to +60°C
Degree of protection*:	IP67
Dimensions:	71x29x19 mm - sensor; 35x8x9 – magnet
Weight*:	20 g - sensor; 3 g – magnet
Built-in sensors:	door state sensor, shock/motion sensor, temperature sensor, leakage sensor
Compatibility:	Pandora security systems with BT 5.0 interface with software version v4.28 and higher

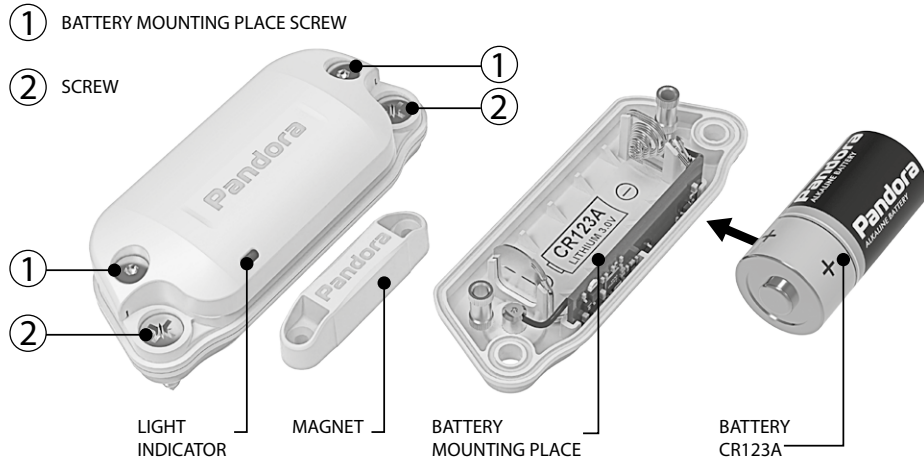
* WITHOUT BATTERY

 THE MANUFACTURER RESERVES THE RIGHT TO CHANGE THE PRODUCT CONFIGURATION AND DESIGN IN ORDER TO IMPROVE ITS TECHNICAL AND OPERATIONAL PARAMETERS WITHOUT NOTIFYING THE CONSUMER.



SENSOR SETTING AND INSTALLATION

Before starting the installation of the sensor, update the system software, pair a sensor with the system and make necessary settings.



Pairing the sensor with the system

The security system supports simultaneous operation of up to 4 sensors. Each sensor must be stored in a separate memory cell DMS 1 / 2 / 3 / 4 using the Programming menu or the Pandora Specialist app.

- Enter the programming level № 10.3.1/10.3.2/10.3.3/10.3.4 or use the Pandora Specialist app to switch system to pairing mode:
 - **Android (BT connection)** -> Advanced mounting -> Bluetooth -> Pairing, unpairing devices -> DMS 1/2/3/4;
 - **Windows/Mac (USB connection)** -> Advanced installation -> Peripheral devices -> Pair a device -> DMS 1/2/3/4.
- Insert the batteries in the sensor.
- The successful pairing will be confirmed by the sound of the «Siren/Beeper».

Setting the system

All sensors paired with the system have the «Additional sensor alarm zone» default logic. For DMS 1 / 2 system settings allow to change default logic or to use sensor for temperature determination.

- In the system settings set DMS 1 / 2 as a security zone: Advanced settings -> Inputs and outputs -> Inputs settings -> DMS 1 / 2 (default logic «Additional sensor alarm zone»).

! WHEN USING THE SENSOR AS THE «ADDITIONAL SENSOR ALARM ZONE», ADDITIONAL SETTINGS ARE AVAILABLE:

MAIN SETTINGS -> SENSOR SETTINGS ->

- DISABLE THE SUPPLEMENTARY SENSOR WHEN THE ENGINE IS RUNNING;
- DISABLE THE SUPPLEMENTARY SENSOR WHEN THE TRUNK IS OPENING;
- DISABLE THE SUPPLEMENTARY WHEN THE RADIO CHANNEL IS OPEN;
- SHOCK SENSOR AND ADDITIONAL SENSOR SWITCHING ON DELAY.

• In the system settings adjust necessary sensor parameters:

Main settings -> DMS settings ->

- Prohibit Bluetooth connection monitoring of DMS -> Enable/Disable;
 - Always consider the detected/lost connection with the sensor -> Enable/Disable
 - Allow use of accelerometer in DMS -> Enable/Disable
 - Allow use of switch in DMS -> Enable/Disable
 - DMS motion sensor setting -> 0 to 100 (0 - minimum sensitivity, 100 - maximum sensitivity)
- Main settings -> Temperature sensor -> Select engine/interior/exterior air temperature sensor -> DMS 1 / 2

! THE AVAILABLE SENSOR FUNCTIONS MAY VARY DEPENDING ON THE MODEL OF THE SECURITY SYSTEM.

Mounting

• When choosing the mounting location of the sensor:

- choose the mounting place as far as possible from the rotation axis of the object;
- conditions for favourable 2.4GHz data transmission to the security system base unit (the signal can pass through plastic or glass, but metal surfaces shield the signal).
- Fix the sensor on the moving and the magnet on the stationary part of the vehicle using double-sided adhesive tape, screws or other available means. The magnet must be installed opposite the sensor with a gap of no more than 5 mm.
- The water leak sensor is triggered when water gets on the sensor plates - use the supplied gasket to ensure the required gap is maintained between the bottom of the sensor and the mounting surface.

